



CAPITAL ICE COMPLEX

An architectural rendering of a large, modern ice skating rink. The scene is overlaid with a semi-transparent orange color. In the foreground, several people are walking on a paved area. In the background, a large, multi-story building with a modern facade is visible. The overall atmosphere is bright and clean.



BISMARCK PARKS
AND RECREATION
DISTRICT

An architectural rendering of a modern, single-story building with large glass windows and a flat roof. The scene is overlaid with a semi-transparent blue color. In the foreground, a dark-colored car is parked on a paved area. Several people are walking on a sidewalk in front of the building. The overall atmosphere is modern and functional.



EXTERIOR PHOTO

- Looking South (North Elevation)



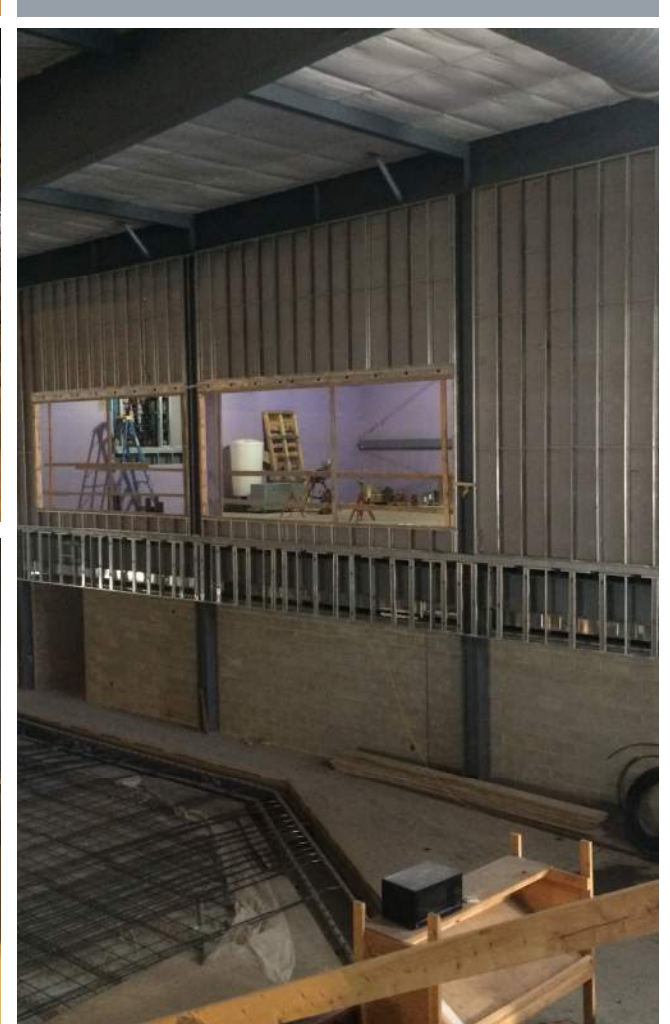
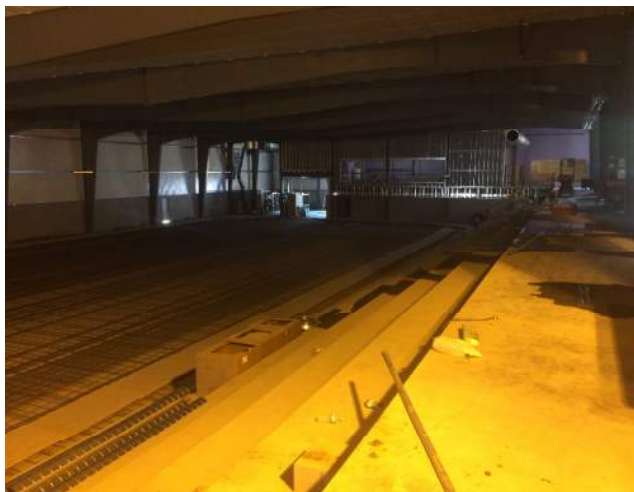
EXTERIOR PHOTO

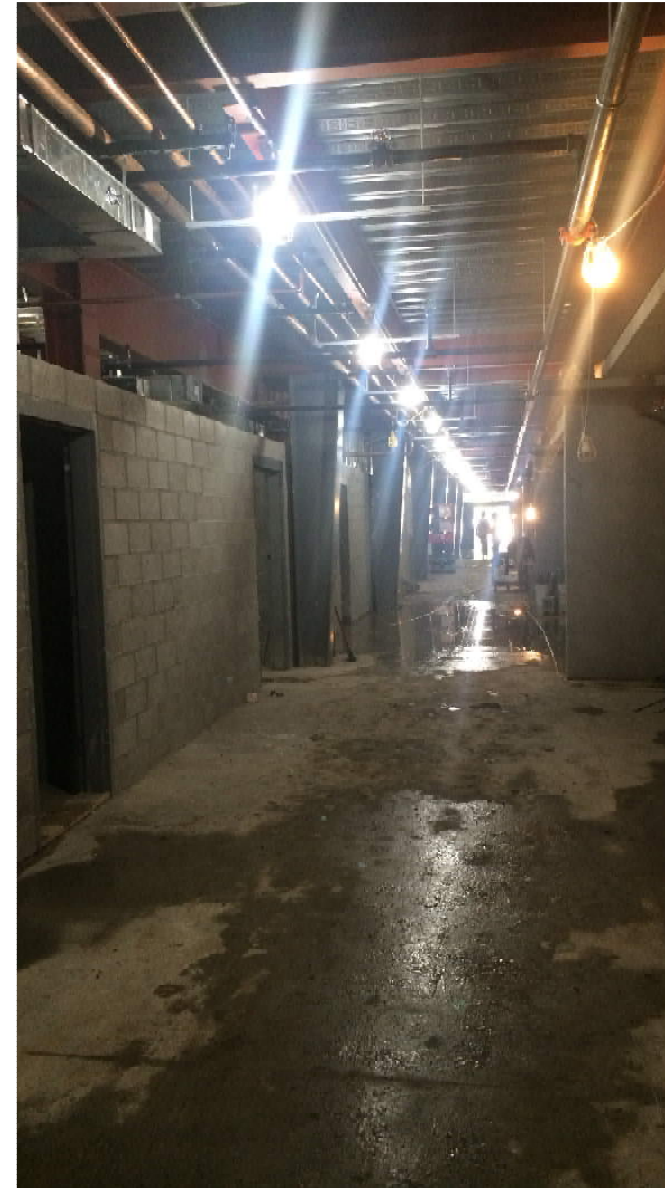
- Looking North (South Elevation)



INTERIOR PHOTO

- Dryland
- Meeting Rooms
- Wachter Rink





INTERIOR PHOTO

- Schaumburg Rink
- New Lobby
- Locker room corridor

CONSTRUCTION

Schedule

- Construction is on schedule
- Substantial Completion set for November 16, 2017

Current Activities

- Piping ice floor and connecting equipment
- Framing on second floor mezzanine
- Finishing masonry in locker rooms
- Roofing over mezzanine
- Plumbing piping in locker rooms
- Electrical getting ready for permanent power



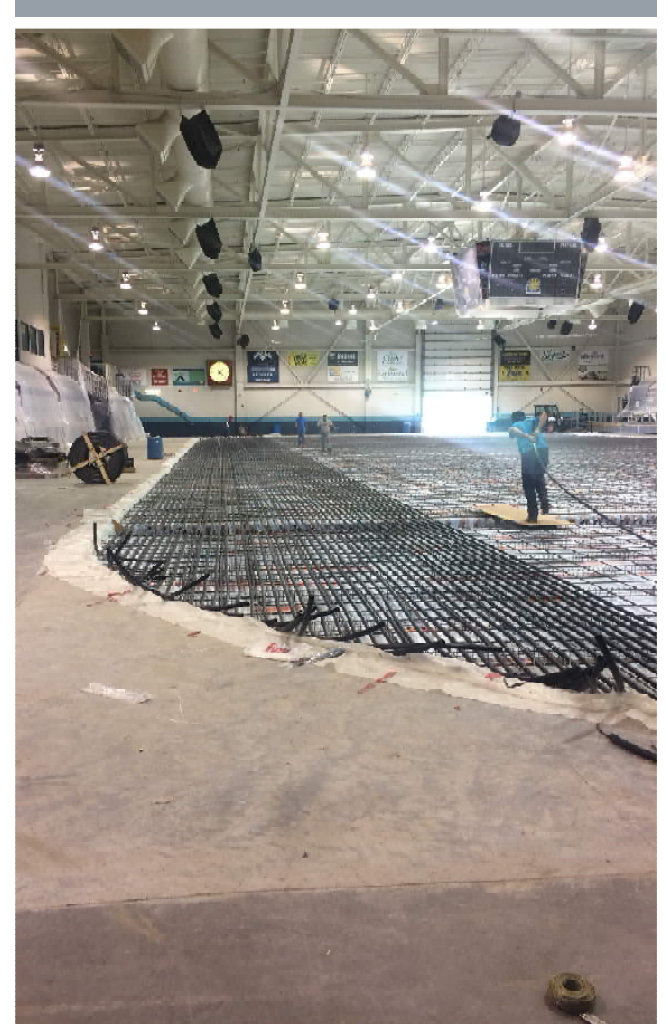
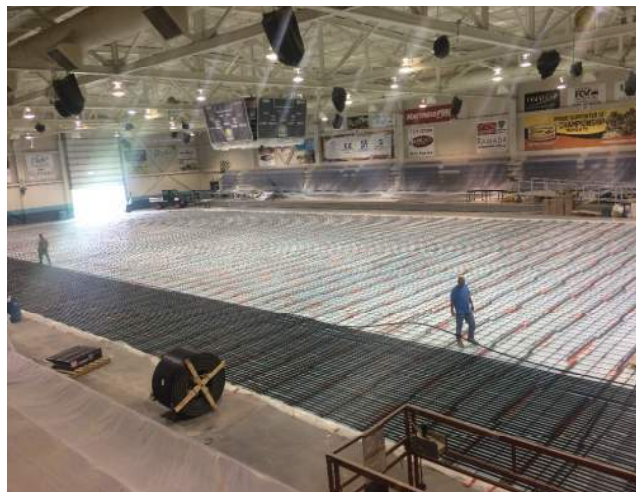
VFW SPORTS CENTER



BISMARCK PARKS
AND RECREATION
DISTRICT

INTERIOR PHOTO

- Curling Rink
- Rink 1



CONSTRUCTION

Schedule

- Construction is on schedule
- Substantial Completion set for September 1, 2017

Current Activities

- Curling rink piping complete, ready to pour
- Rink I – Heating piping complete
- Rink I – Insulation complete
- Rink I – Piping to be complete July 23rd
- Curling Rink and Rink I will be poured July 26th and 27th