

April 17, 2025



City of Bismarck

South Bismarck Flood Control

Bismarck Parks and Recreation District

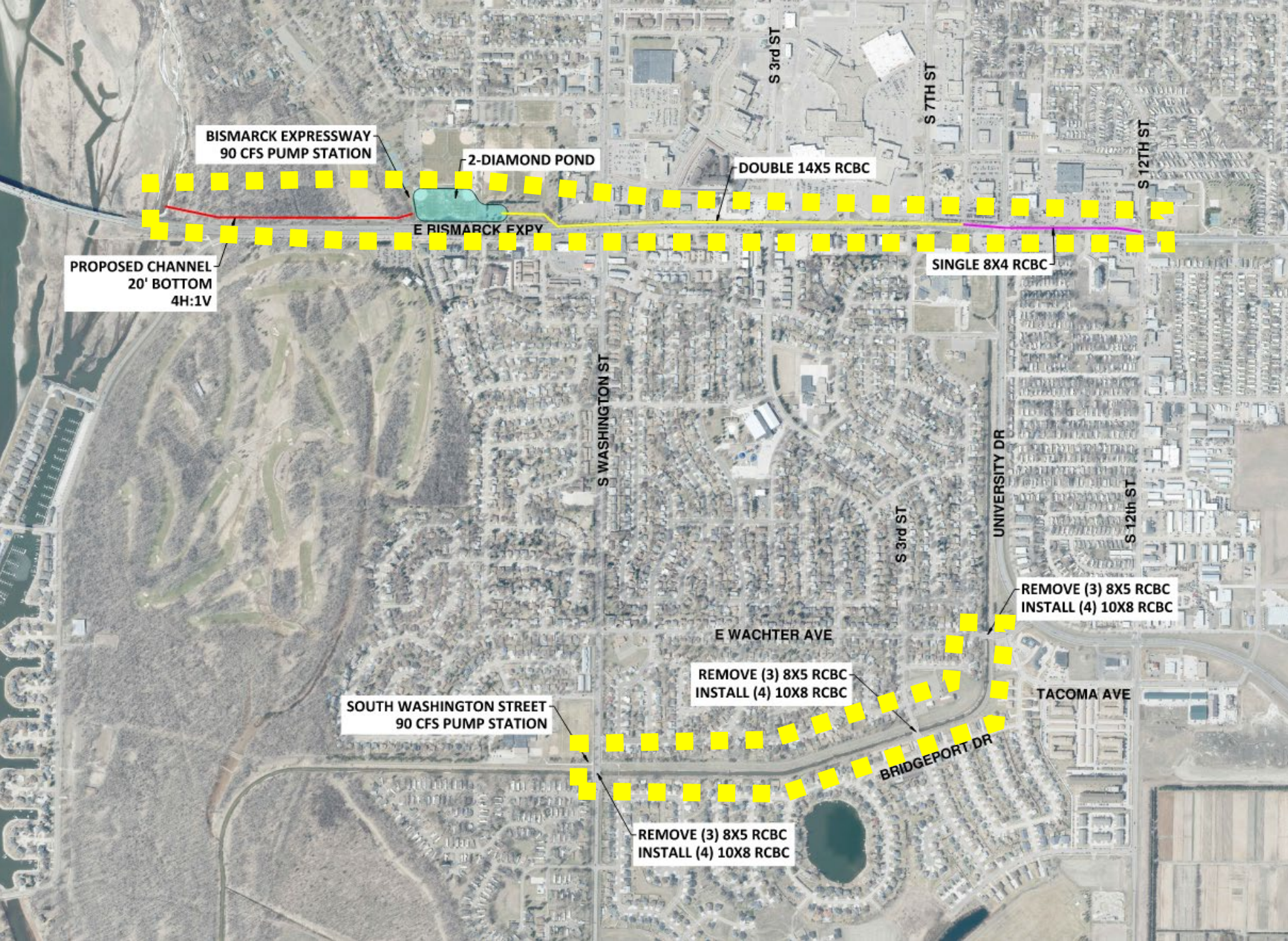


Outline

- Funding Update
- Clem Kelly Options Review (with cost comparison)
- No Pond Options
- Next Steps

Funding Update

- FEMA Flood Mitigation Assistance Grant
- ND House Bill 1020



NOTES:

1. ALL IMPACTED FACILITIES WILL BE REPLACED AT A MINIMUM 1:1 RATIO.
2. PARKING WILL BE REPLACED AT A MINIMUM 1:1 RATIO.



Arbor Ave

Parking

Soccer

Outdoor
Workout

Parking

Pickleball

Tennis

Ball Fields

Orchard

Bismark Expy

S Washington St



NOTES:

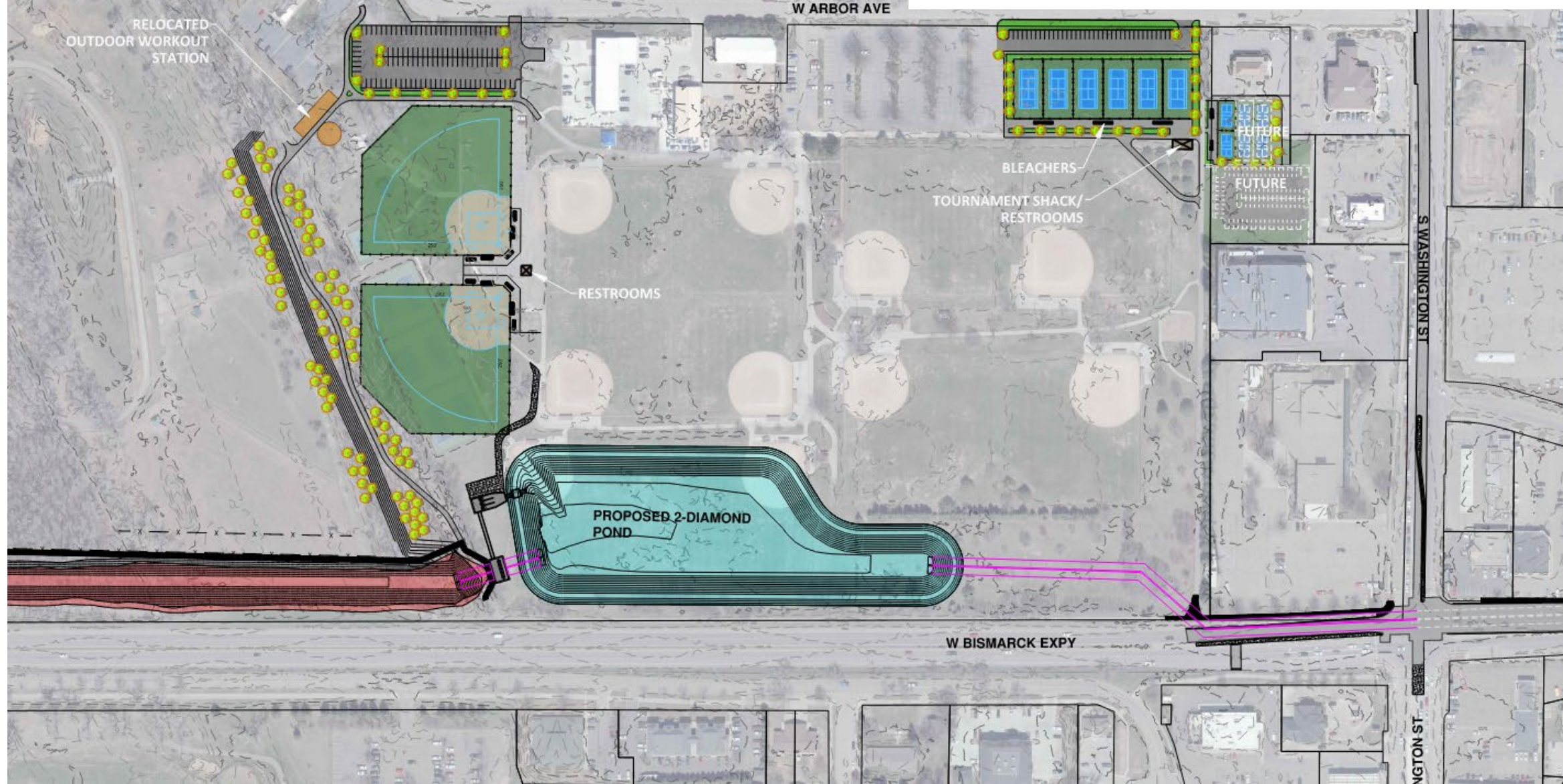
1. ALL IMPACTED FACILITIES WILL BE REPLACED AT A MINIMUM 1:1 RATIO.
2. PARKING WILL BE REPLACED AT A MINIMUM 1:1 RATIO.

Pond Option 1A-1C

Option 1C:

This option includes the relocation of 2 softball fields, tennis and pickleball courts, the outdoor fitness station, the soccer field, and associated parking. This option also includes land acquisition on the east side of the park to accommodate the pickleball courts and additional parking adjacent to the tennis courts.

Clem Kelley Park/Dakota Zoo Mitigation:	\$4,237,000
Cottonwood Park Soccer Mitigation:	\$1,512,000
Total	\$5,749,000



NOTES:

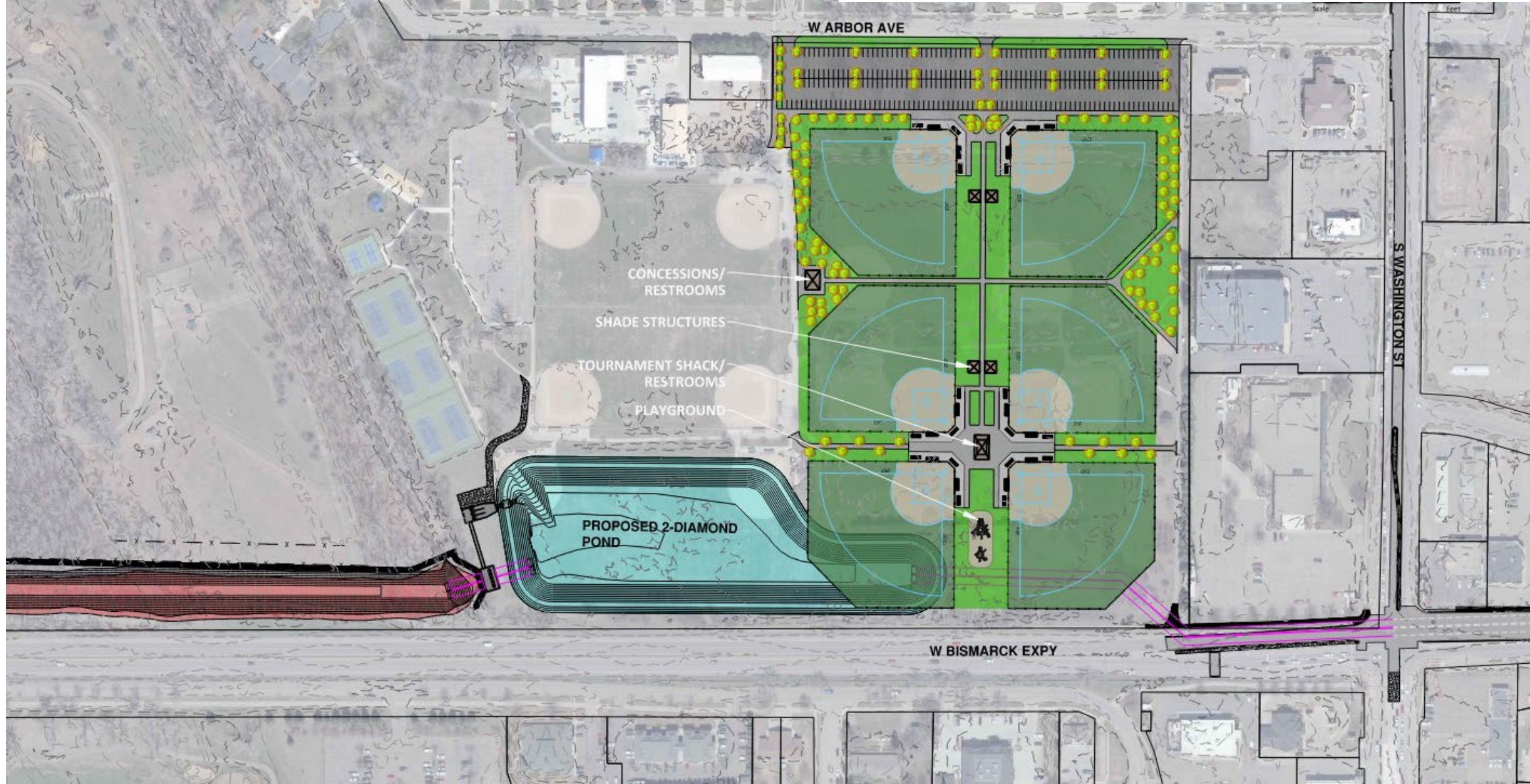
1. ALL IMPACTED FACILITIES WILL BE REPLACED AT A MINIMUM 1:1 RATIO.
2. PARKING WILL BE REPLACED AT A MINIMUM 1:1 RATIO.

Pond Option 2

Option 2:

This option includes the relocation of 6 softball fields, the soccer field, and associated parking.

Clem Kelley Park/Dakota Zoo Mitigation:	\$7,674,000
Cottonwood Park Soccer Mitigation:	\$1,512,000
Additional Flood Control Improvements Cost:	\$1,422,000
Total	\$10,608,000



NOTES:

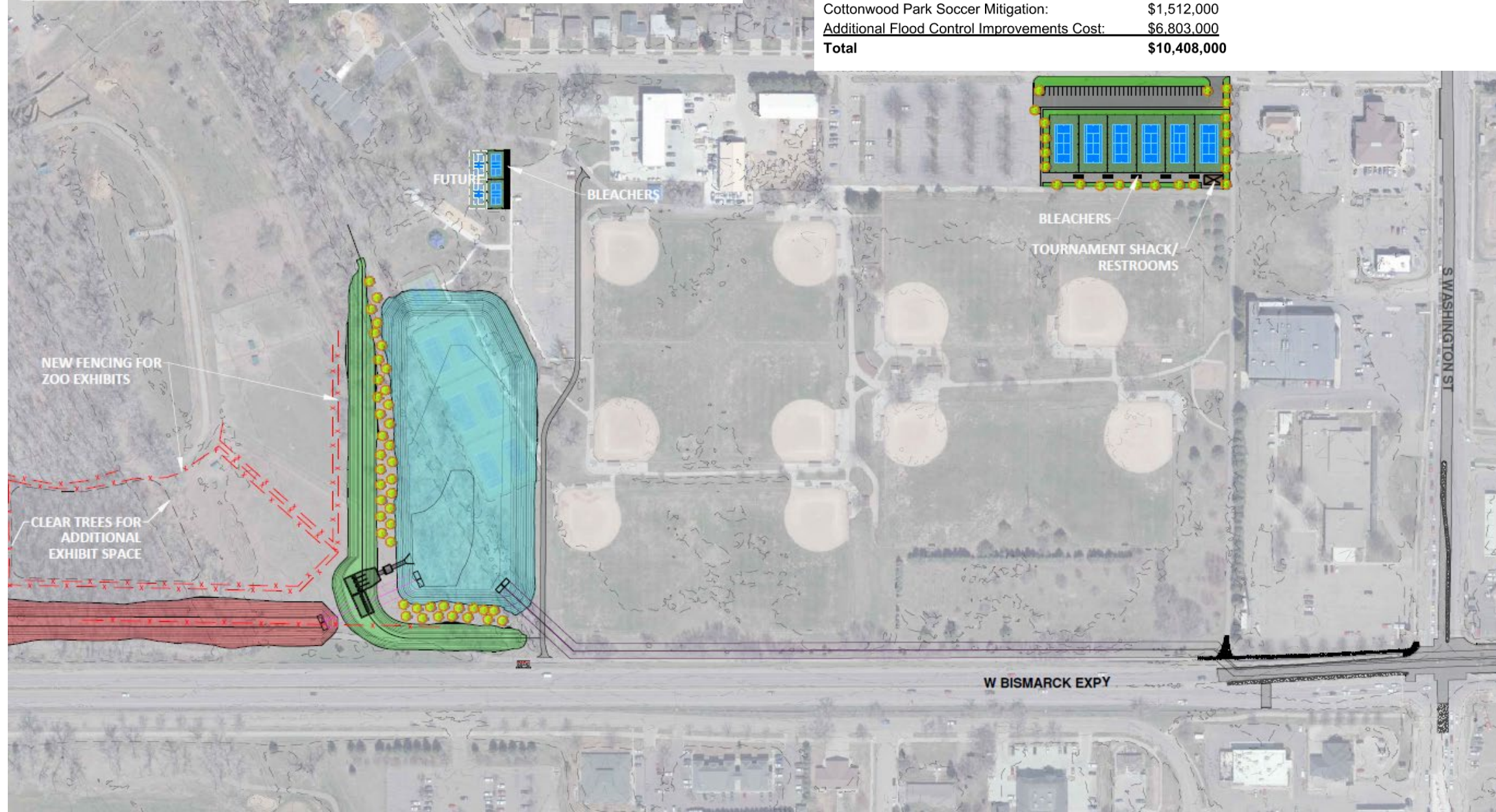
1. ALL IMPACTED FACILITIES WILL BE REPLACED AT A MINIMUM 1:1 RATIO.
2. PARKING WILL BE REPLACED AT A MINIMUM 1:1 RATIO.

Pond Option 3

Option 3:

This option includes the relocation of the tennis and pickleball courts, the soccer field, and associated parking. It also includes reconfiguration of adjacent zoo exhibits due to the proposed flood control measures.

Clem Kelley Park/Dakota Zoo Mitigation:	\$2,093,000
Cottonwood Park Soccer Mitigation:	\$1,512,000
Additional Flood Control Improvements Cost:	\$6,803,000
Total	\$10,408,000



Pond Cost Difference Summary

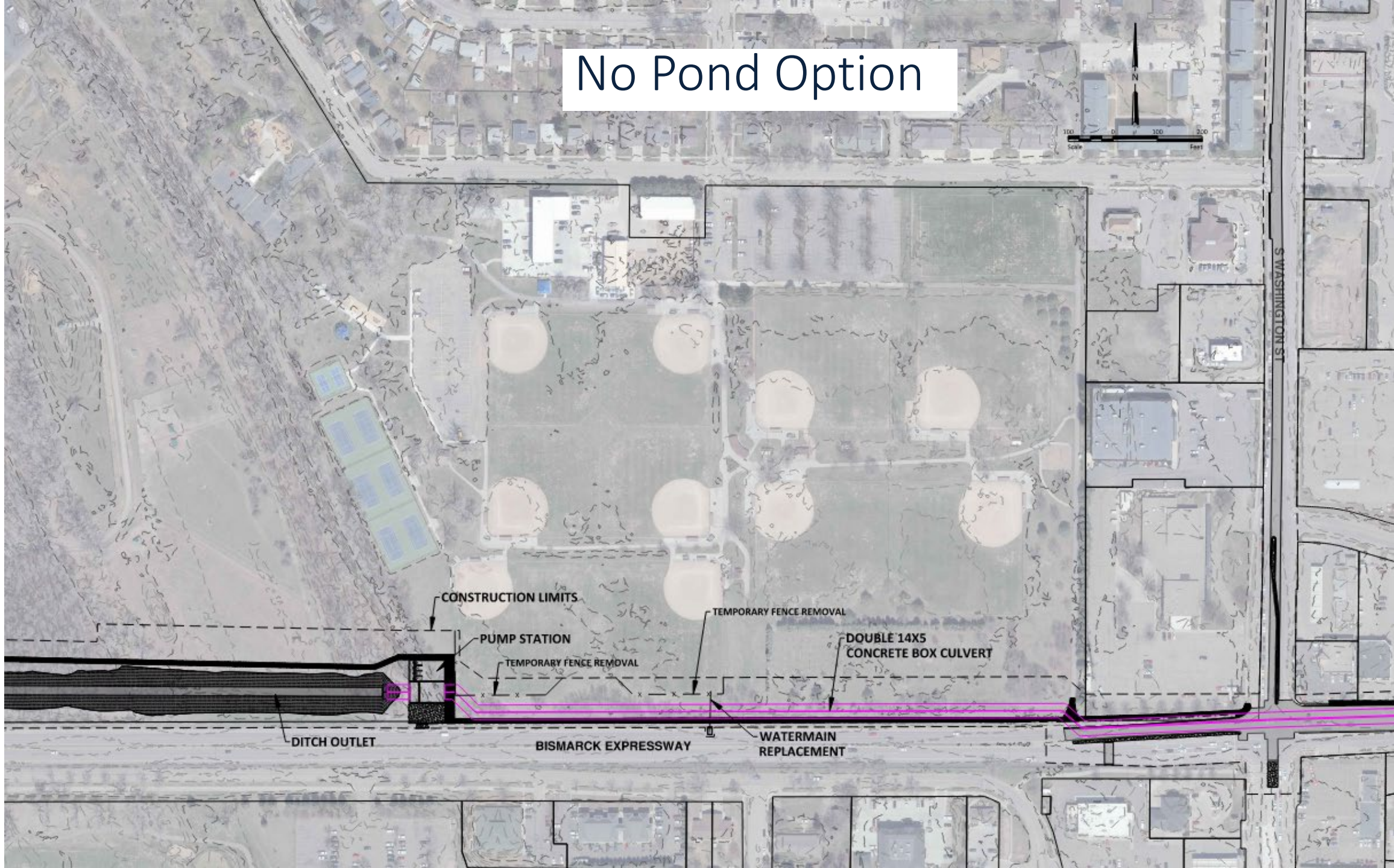
Summary of Estimated Costs:

Option 1A:	\$5,049,000
Option 1B:	\$5,311,000
Option 1C:	\$5,749,000
Option 2:	\$10,608,000
Option 3:	\$10,408,000

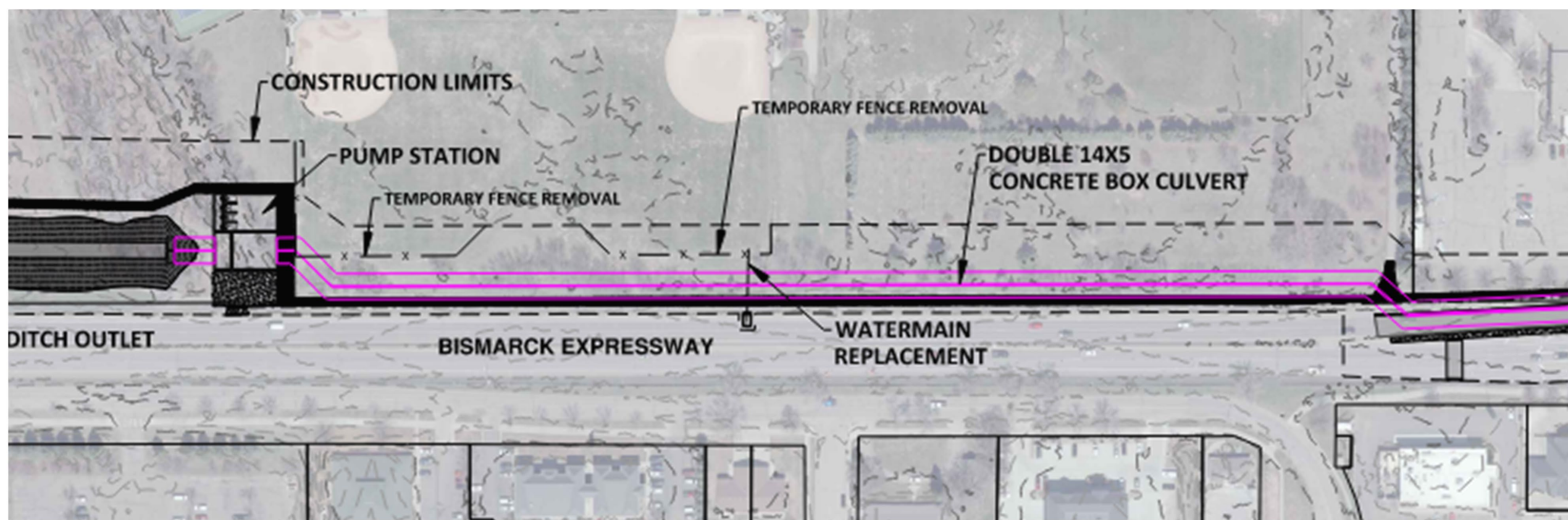
No Pond Option

- Variables
 - Storage
 - Pump Station
 - Box Culvert Sizing

No Pond Option



No Pond Option



Assumes no permanent impacts/mitigation to Clem Kelly complex

No Pond Option

- Base is 90 cfs pump station and 2-diamond pond
- Option A – 120 cfs pump station, increase box culvert size
- Option B – 160 cfs pump station, no increase to box culvert size
- Option C – 90 cfs pump station, underground storage

No Pond Cost Difference Summary



No Pond Options

Option A: \$6,463,000

Option B: \$9,928,000

Option C: \$12,160,000

Cost Difference Summary

Summary of Estimated Costs:

Pond Options

Option 1A:	\$5,049,000
Option 1B:	\$5,311,000
Option 1C:	\$5,749,000
Option 2:	\$10,608,000
Option 3:	\$10,408,000

No Pond Options

Option A:	\$6,463,000
Option B:	\$9,928,000
Option C:	\$12,160,000

Recommended

Next Steps

- Questions?
- No pond Option A to be pursued
- Avoid permanent impacts/mitigation to Clem Kelly
- City Commission Update
 - Integrate latest funding update
 - Integrate BPRD requests/direction