



# BPRD Comprehensive Plan: Parks, Trails, Facilities & Programs

2023-2028

*ADOPTED 12-15-2022*



**BISMARCK PARKS AND  
RECREATION DISTRICT**  
Est. 1927

# COMPREHENSIVE PLAN PARKS, TRAILS, FACILITIES & PROGRAMS

## TABLE OF CONTENTS

<b>1. Introduction</b>	<b>3</b>
1.1. Demographics	4
1.2. Bismarck Demographics	5
1.3. Goals and Objectives 2023-2025	10
<b>2. District Overview</b>	<b>7</b>
2.1. District Organizational Chart	7
2.2. District Planning Process	8
<b>3. BPRD Planning</b>	<b>9</b>
3.1. History	9
3.2. BPRD Goals and Objectives	10
<b>4. Industry Snapshot</b>	<b>11</b>
4.1. Trends	11
4.2. Park Metrics	13
<b>5. Community Snapshot</b>	<b>14</b>
5.1. Public Input	14
5.2. Recreational Facilities	17
5.3. Land Analysis	18
5.4. Inventory and Analysis of Programs	21
5.5. Inventory and Analysis of Trails	26
5.6. Park and Trails Map	27
<b>6. Needs Analysis</b>	<b>28</b>
6.1. Recreational Facilities	28
6.2. Parks and Open Space	29
6.3. Park Search Areas Map	30
6.4. Trails	31
6.5. Future Trails Map	32
<b>Appendices</b>	
Appendix A - Recreation Programming Plan	
Appendix B – Natural, Historical & Cultural Resources Management & Stewardship Plan	

# INTRODUCTION

The BPRD Comprehensive Plan is a summary of all the planning tools used in the strategic planning process, including community input, profiling, inventories, analysis, and needs assessments.

Bismarck Parks and Recreation District (BPRD) has a history of planning, including comprehensive plans, strategic planning and park master plans. In 2006, BPRD started a new wave of long-range planning with a wide range community input survey, a reworking of the district's vision, mission and values, and an in-depth evaluation of the district including past plans, facility and land assessments, and funding opportunities.

The goals derived from the planning process will be the long-range goals of the district for the foreseeable future. The objectives and actions that stem from these overarching goals will be reevaluated every year as the strategic plan is updated. A schematic of the planning process from comprehensive plan to annual budget and action plan is shown on the following page.

Through this comprehensive planning process and with review and analysis of the information gathered, BPRD has set forth the following vision, mission, core values and core purpose.

**Vision:** Be the leader and premier provider of public parks, programs, facilities and leisure services.

**Mission:** Work with the community to provide residents and visitors the highest quality park, program, facility and event experience.

**Core Values:**

- *Accountability*
- *Collaboration*
- *Community*
- *Diversity*
- *Integrity*
- *Professionalism*

**Core Purpose:**

*Provide affordable, accessible and sustainable public park and recreation services.*

# COMMUNITY OVERVIEW

Bismarck lies along the banks of the Missouri River in the heart of North Dakota and is home to Bismarck Parks and Recreation District (BPRD).

## DEMOGRAPHICS

The City of Bismarck encompasses 34.8 square miles and in 2020, was estimated to have a population of 73,622. This encompasses only those living within the city limits and not the continually expanding rural population of Bismarck. The population is expected to grow by over 32% by 2030, with the boundary of the City of Bismarck growing each year.

POPULATION PROJECTION	2020	2030	2040
BISMARCK	73,622	97,446	115,221
OTHER COUNTY	24,836	30,603	36,186
TOTAL COUNTY	98,458	128,042	151,408

Sources: U.S. Census Bureau, City of Bismarck Planning & Development Department

Bismarck has the largest percentage of retired persons and children in the state. The following tables show the population percentages over age 65 and under age 18 for the City of Bismarck compared to the other two largest cities in North Dakota. Over 17% of the population is retirement age, and over 22% are school age children or younger.



# COMMUNITY OVERVIEW

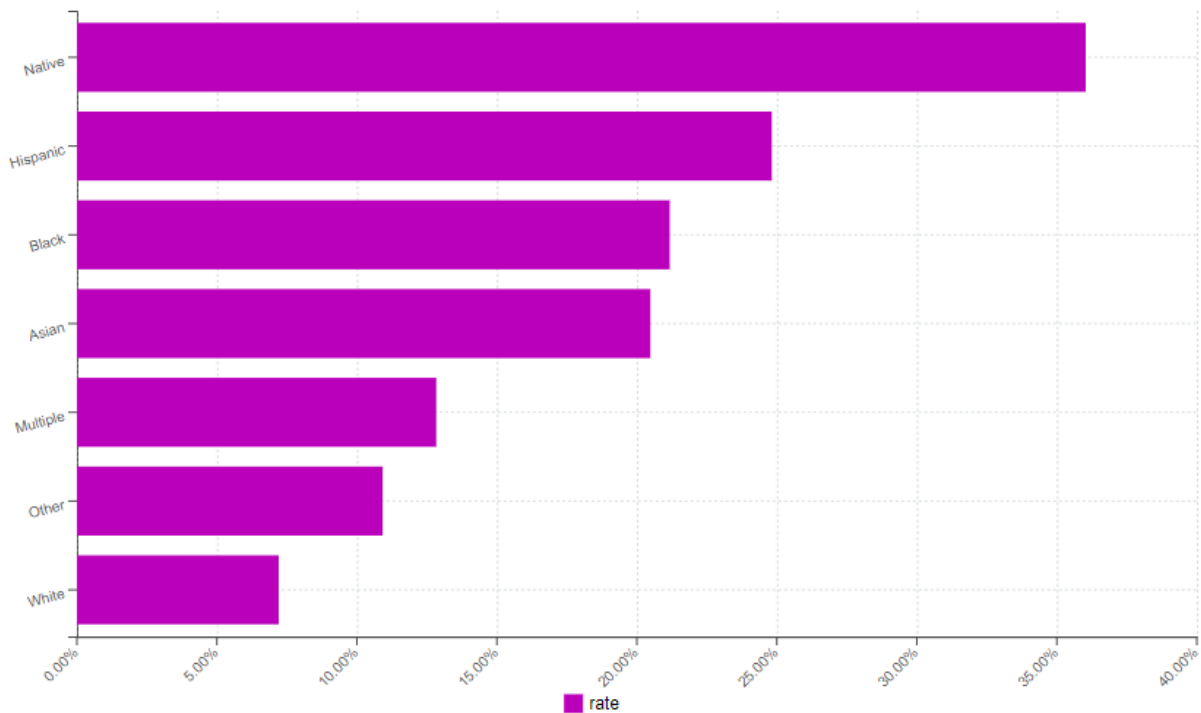
## Bismarck Demographics

According to the most recent ACS, the racial composition of Bismarck was:

- White: 89.85%
- Native American: 4.35%
- Black or African American: 2.66%
- Two or more races: 1.85%
- Asian: 0.92%
- Other race: 0.26%
- Native Hawaiian or Pacific Islander: 0.12%

According to Bismarck Public Schools, one in four students currently qualifies for free or reduced lunch, falling below the poverty line. And there are over 300 students considered homeless.

**Bismarck Poverty by Race**



Source: World Population Review



To look at long-range planning for the park district, BPRD reviewed and/or was involved in the community plans outlined below. Any comprehensive planning effort by BPRD needs to align with the plans of the community.

## **Together 2045 – Bismarck’s Comprehensive Plan**

The target date for completion of the plan is December 2022. The plan will address many elements of the community, including land use, community facilities, arts and culture, recreation, and natural resources. BPRD staff members are participating in several of the elements as they relate to parks and recreation.

## **City of Bismarck Strategic Plan: Imagine Bismarck**

Approved in June, 2019,

## **Bismarck-Mandan Bicycle + Pedestrian Master Plan**

Completed in December, 2017, this plan included input from both Cities, both Park Districts and many other groups in the community. The plan looks at the bicycle and pedestrian network in both communities and provides goals for promoting alternative transportation in four areas: engineering, education, encouragement and enforcement.

## **Bismarck North Dakota Growth Management Plan**

The Bismarck Board of City Commissioners approved the proposed 2014 Growth Management Plan after a public hearing on April 22, 2014. BPRD involvement in the plan included the Executive Director serving on the technical committee and the Park Board President served on the Policy Committee. BPRD reviewed and assisted in developing the open space and park components of the plan.

## **Bismarck-Mandan Metro Area Long-Range Transportation Plan: Envision 2040**

BPRD has provided input and review of long-range recreation trail and pedestrian routing as transportation alternatives. The plan was adopted by the Bismarck-Mandan Metropolitan Planning Organization on March 17, 2015.

## **City of Bismarck North Dakota Comprehensive Land Use Policy Plan**

Published by the Bismarck-Burleigh County Planning Department.

BPRD uses the plan as a reference in identifying land planning and potential acquisition of park land or open space.

## **Burleigh County Comprehensive Land Use Plan**

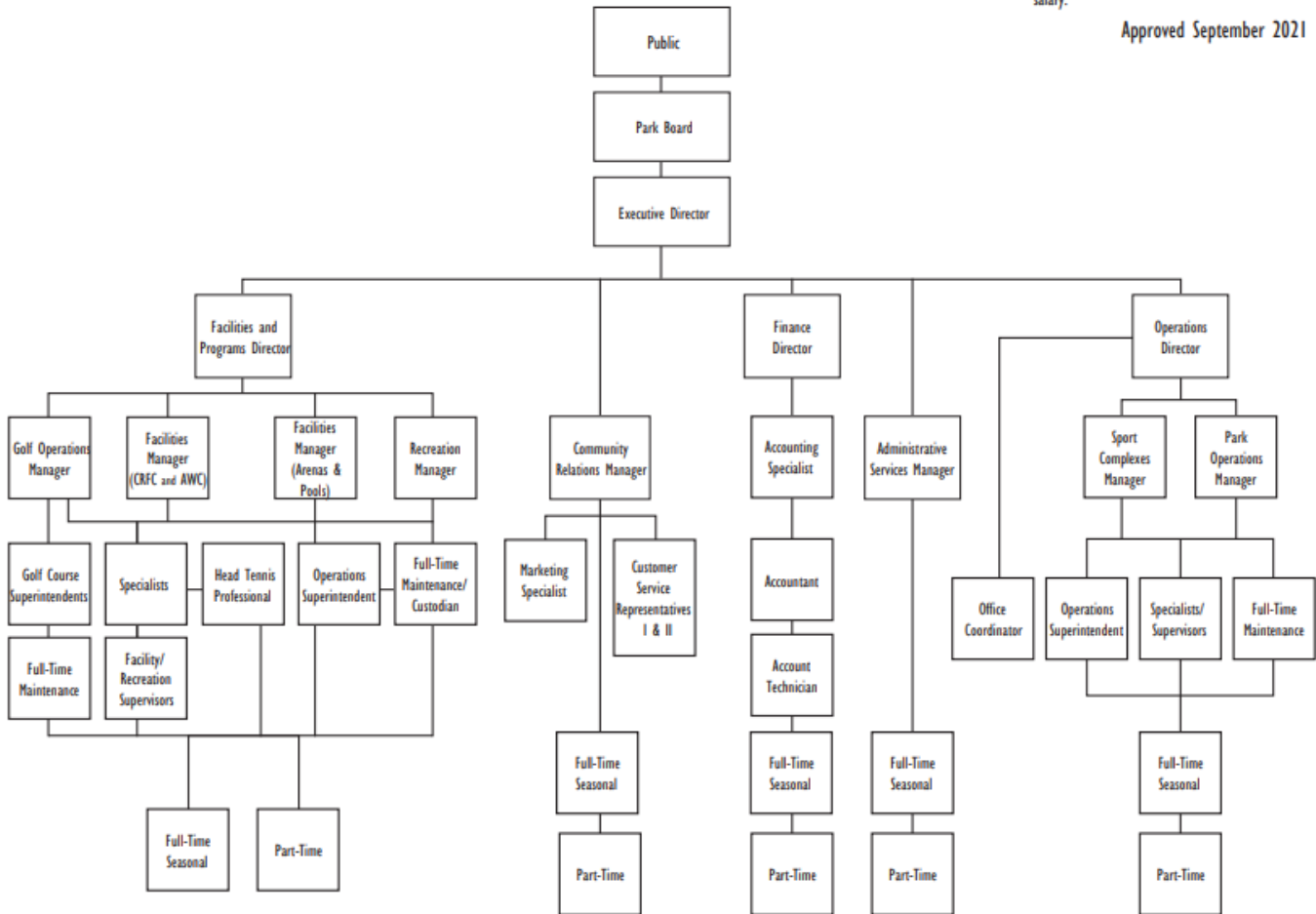
Plan development has been ongoing since 2005. BPRD participated originally by presentations to the Burleigh County Commission Committee. Plan was discarded, revised and accepted in 2014.



## Organizational Chart

Note:  
Organizational chart indicates structure and line of authority not representative of positions and salary.

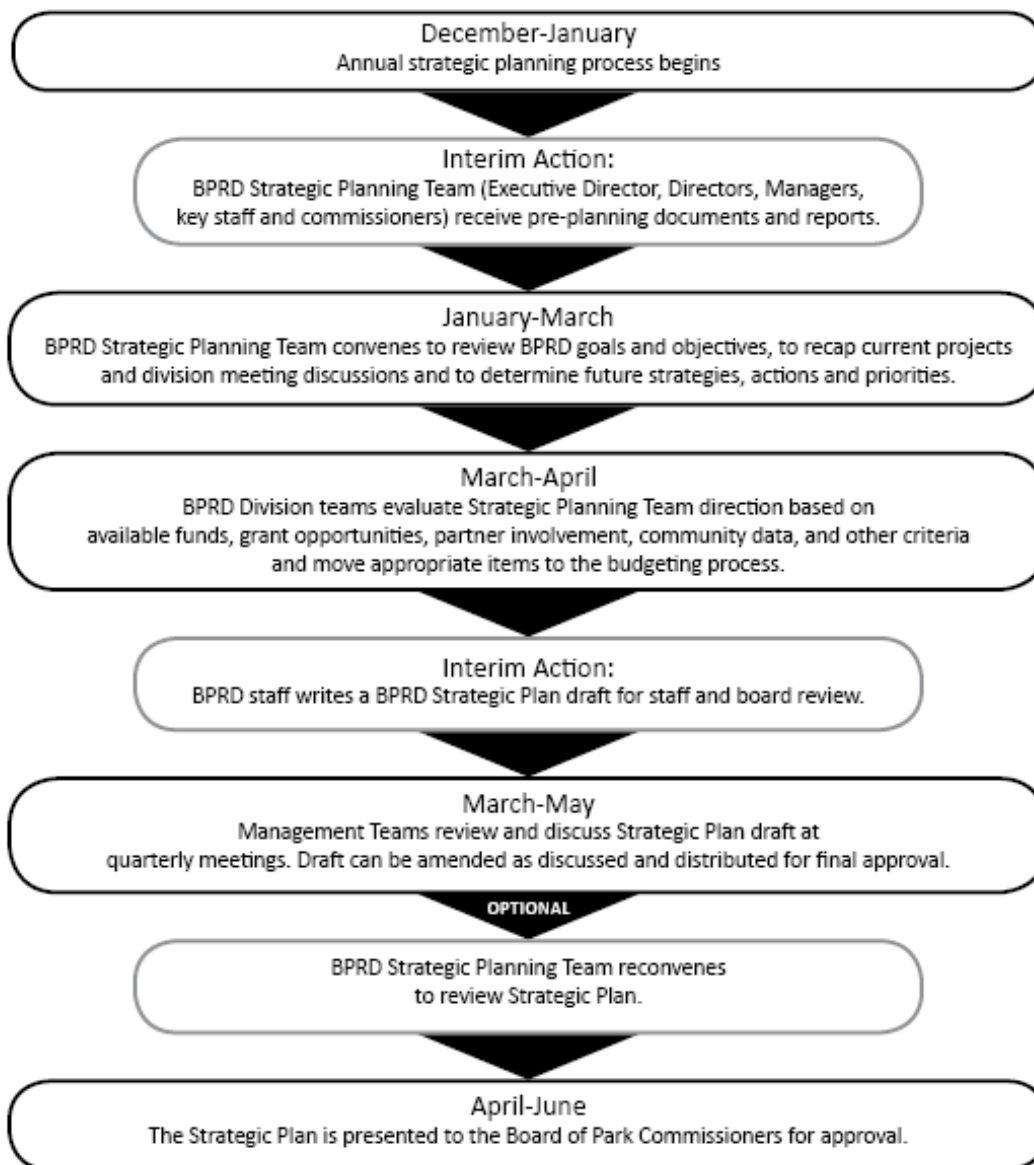
Approved September 2021



This diagram shows the annual planning process that begins with re-evaluating the comprehensive planning tools and the objectives and actions of the previous year's strategic planning.



## Strategic Planning Process





BPRD has a long history of comprehensive planning, going back to its first officially adopted plan in 1987. The planning process includes re-evaluating previous plans and resulting actions.

- Parks and Recreation System Comprehensive Plan (1987)
- Toward 2000 Parks and Recreation Comprehensive Plan (1995)
- Path to 2005 Bismarck Parks and Recreation District Strategic Plan (2001)
- Bismarck Parks and Recreation District “Path to 2005”: Mid-point Update (2003)
- McDowell Dam Recreation Area Strategic Plan (2005)
- *Strategic Plan 2008-2010*

*Included 2006 report by Great Plains Benefits Group with results of public input survey, community leader input and staff/user group input. A new vision, mission, core values and core purpose were developed as part of this plan.*

Ongoing planning includes yearly budget plans, seasonal programming plans and day-to-day planning including responding to comments, updating programs and facilities, and maintenance changes.

- *Comprehensive Plan: Input, Inventories & Analysis 2010-2015, 2018-2023, 2023-2028*
- *Resource Management Plan 2009-2011, 2013-2015, 2023-2028*
- *Recreation Programming Plan 2018-2023, 2023-2028*
- *Strategic Plan Updates 2009-2011, 2010-2012, 2011-2013, 2012-2014, 2013-2015*
- *Strategic Plan Updates 2014-2016, 2015-2017, 2016-2018, 2017-2019, 2018-2020, 2019-2021, 2020-2022, 2021-2023, 2022-2024*

BPRD also completes an “Improvements Summary” each year, which looks at all the projects completed by the BPRD by type of project and cost. The Improvement Summary generally covers a three-year time period.

## Goals and Objectives 2023-2025

GOAL: Create, advocate, and preserve diverse recreational and leisure opportunities for all.

Objective: Reinvest in existing parks, programs, and facilities to maximize community access and usability.

Objective: Create new and redevelop existing parks, facilities, and programs to accommodate a growing, changing, and diverse community.

GOAL: Ensure professional delivery and operation of public park and recreation services, facilities, and programs.

Objective: Invest in staff and staff resources to provide the highest quality customer service and experience.

Objective: Achieve the highest standards of public safety for participants and staff at all parks, trails, and facilities and within all programs.

GOAL: Be an effectively governed, efficiently managed and fiscally sound organization.

Objective: Utilize revenue policy to continually improve the District and to support new development and offerings.

Objective: Establish policy and set direction in the interest of the community and stakeholders.

Objective: Secure resources in cooperation with public and private entities, including the land necessary for trails, parks, and facilities development and open space.

GOAL: Develop community relations initiatives that will result in greater awareness of the role played by the BPRD in healthy lifestyles, environmental stewardship, and community livability.

Objective: Develop the means, methods, and messages to effectively communicate with the public all activities, issues, opportunities, and accomplishments.

Objective: Develop models and continue practices of environmental stewardship and conservation for the community.

### Recreation Trends Analysis

**More Active Seniors:** Over 17 percent of Bismarck's population are over 65 years of age. In North Dakota, the percent of the population over the age of 65 is expected to jump from 15% in 2010 to 23% in 2020. As the life expectancy age continues to rise, more and more seniors are demanding more recreation and programs for many more years past retirement.

- Pickleball is the number one growing sport in the country and highest demand locally
- Non-traditional fitness areas, including outdoor fit lots and active benches

**Increasing Diversity:** The percentage of minorities in Bismarck is over 10% and continues to increase.

- Sports like cricket and other activities not originating in the US are on the rise

**Decline in Youth Sports:** Formal youth programs starting at a young age are being reconsidered.

- Focus on recreational sports programs vs. competitive sports
- More multi-sport programs are on the rise to expose kids to all available sports, including some non-traditional sports, including e-sports, parkour, and mountain biking.

**Increasing Access to Technology:** Park and facility users are more and more tech-savvy and expect to have the latest technology at their fingertips.

- Mobile websites and apps
- Technology improving maintenance efficiencies (autonomous mowers, GPS, virtual tools)
- Self-monitoring technology (fitbits, etc)
- Games and apps that get people moving (Pokemon Go, etc)

**Increased Desire for Nature-based Programming:** More complicated lives and a post-Covid world are leading many toward finding a way back to nature.

- Hiking and mountain biking trails and interpretive trails
- Ways to explore nature, both structured and unstructured
- Non-motorized water use, including kayak and paddleboard
- Nature-based playgrounds
- Technology and nature (geo-cache)
- Community gardens/ orchards/ farmers markets

# INDUSTRY SNAPSHOT

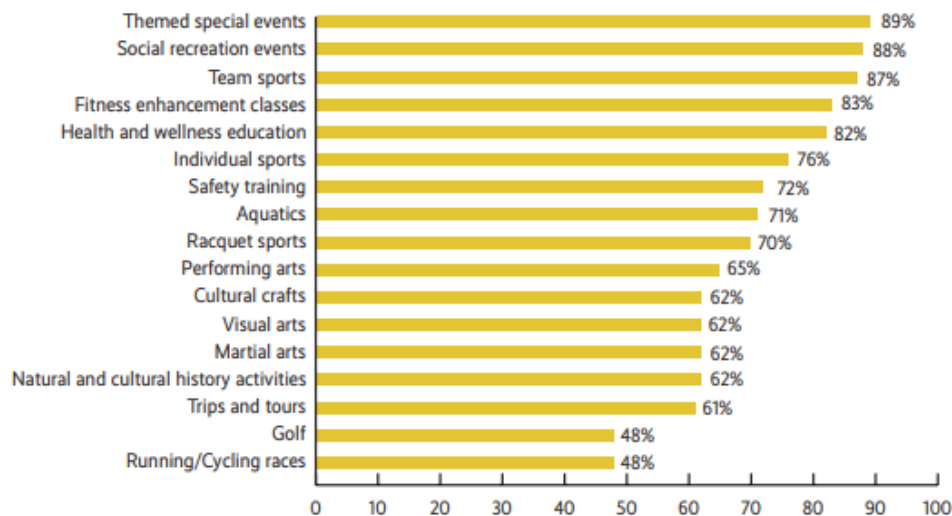
**New Looks and Locations for Public Spaces:** With land costs at a premium, some communities are getting creative with where their programming is planned.

- Parklets: public spaces temporarily set up in on-street parking spaces
- Parks developed on land that was formerly parking lots, railroad lines, and more.
- Roof gardens & open spaces
- Multi-sport complexes: indoor and outdoor sport venues in one location
- Utilizing mobile play options like the Imagination Playground so that play can happen indoors, outdoors, anywhere.

## Move toward More Non-structured Recreation

- Trails, both paved and unpaved
- Access to water
- Pools/ splash pads
- Picnic areas/ Playgrounds
- Outdoor fitness/ obstacle course

**FIGURE 6: PROGRAMMING OFFERED BY PARK AND RECREATION AGENCIES  
(PERCENT OF AGENCIES)**



2021 NRPA AGENCY PERFORMANCE REVIEW

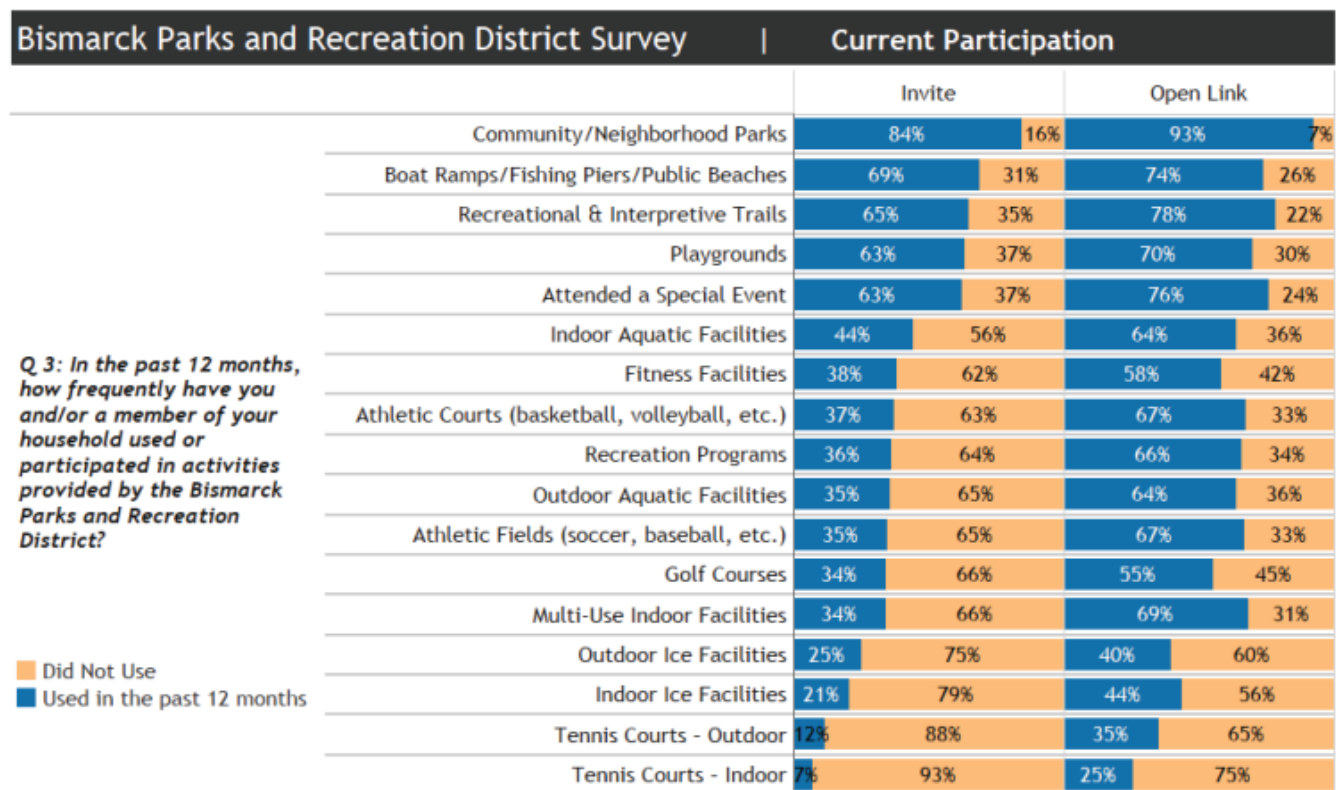
Park Metrics, formerly PRORAGIS (Parks and Recreation Operating Ratio and GIS) is the national recreation and parks database and the source for critical data designed to assist park and recreation professionals in the effective management and planning of their resources and facilities. As a national database, the power of Park Metrics is its ability to run comparative reports to help agencies effectively manage and plan their resources and facilities. The following sample graph shows 2022 BPRD data in comparison to other park districts and departments.

### Activities

	Your Agency	All Agencies	Population Density per Sq Mile 1,501 To 2,500
<b>1. Percentage of agencies offering the following activities:</b>			
a. Health and wellness education	X	80.3%	84.3%
b. Safety training	X	72.2%	74.2%
c. Fitness enhancement classes	X	82.2%	87.4%
d. Team sports	X	86.9%	91.2%
e. Individual sports	X	75.9%	81.8%
f. Running/cycling races		50.2%	54.7%
g. Racquet sports	X	71.2%	78.0%
h. Martial arts	X	58.8%	59.8%
i. Aquatics	X	70.2%	74.2%
j. Golf	X	47.9%	60.4%
k. Social recreation events	X	88.4%	94.3%
l. Cultural crafts	X	61.6%	71.7%
m. Performing arts	X	63.5%	69.2%
n. Visual arts	X	62.6%	65.4%
o. Natural and cultural history activities	X	61.6%	69.2%
p. Themed special events	X	89.9%	95.6%
q. Trips and tours		61.2%	59.1%
r. eSports/eGaming		12.2%	16.4%
<b>2. Percentage of agencies offering the following Out-of-School Time (OST) activities:</b>			
a. Summer camp	X	83.2%	88.5%
b. Before school programs	X	19.0%	16.2%
c. After school programs	X	54.5%	58.9%
d. Preschool		34.5%	34.7%
e. Full daycare		7.1%	4.0%
f. Specific teen programs	X	66.3%	73.0%
g. Specific senior programs	X	78.6%	85.1%
h. Programs for people with disabilities	X	62.4%	65.3%
i. STEM programs		57.6%	61.3%

## Survey Results

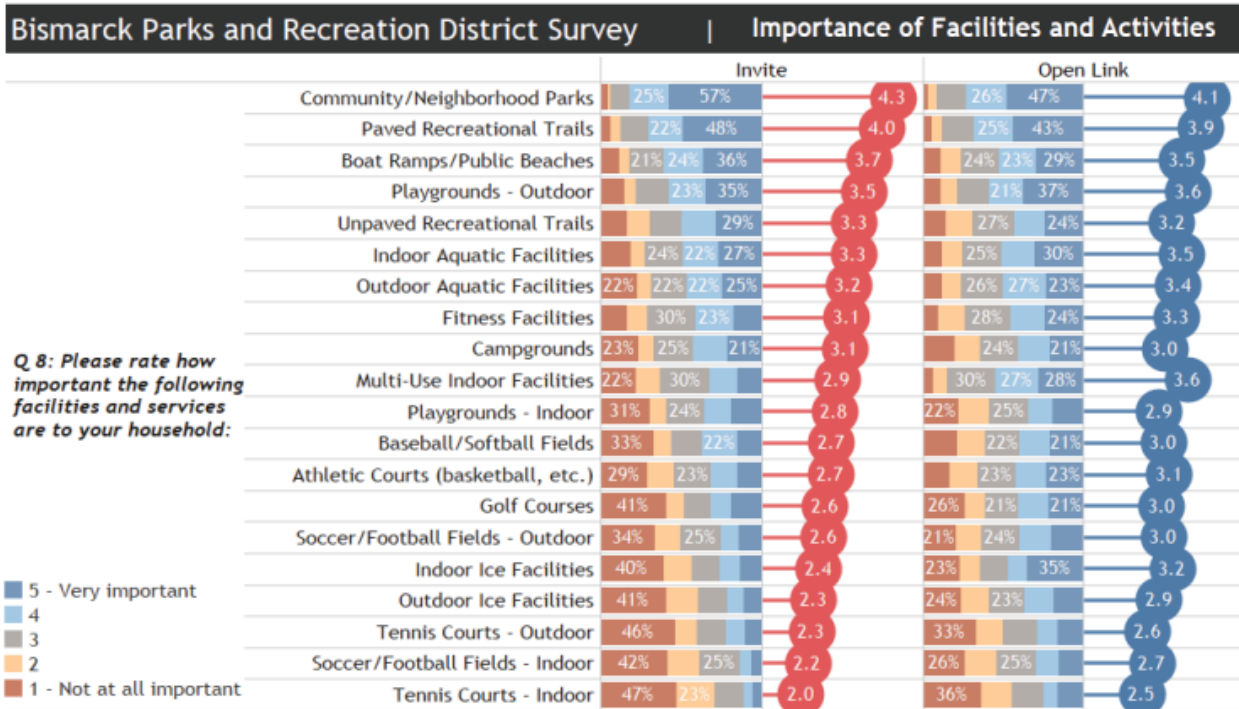
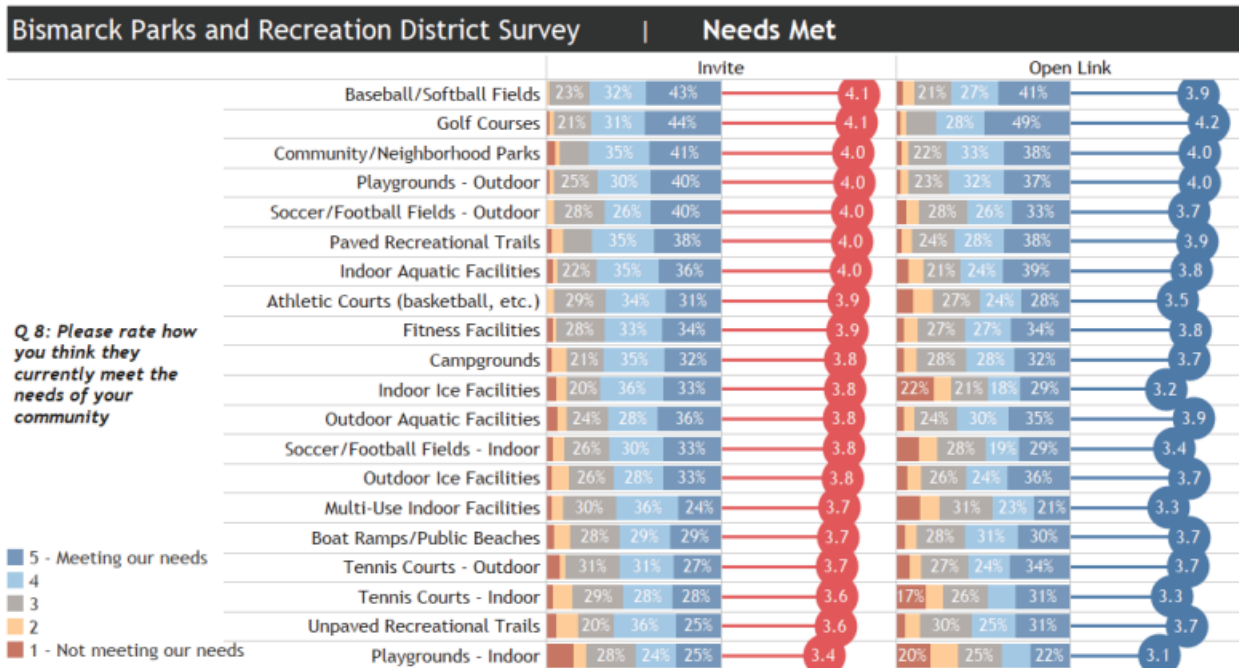
In February of 2019, Bismarck Parks and Recreation District (BPRD) invited Bismarck residents to participate in a community survey and share their views on programs, parks and facilities. The survey was both a statistically valid invitation survey, completed by 306 respondents, and an open-link online survey, completed by 1,411. The purpose of the survey was to measure needs, trends and priorities, as well as to receive public input on BPRD strengths and opportunities.



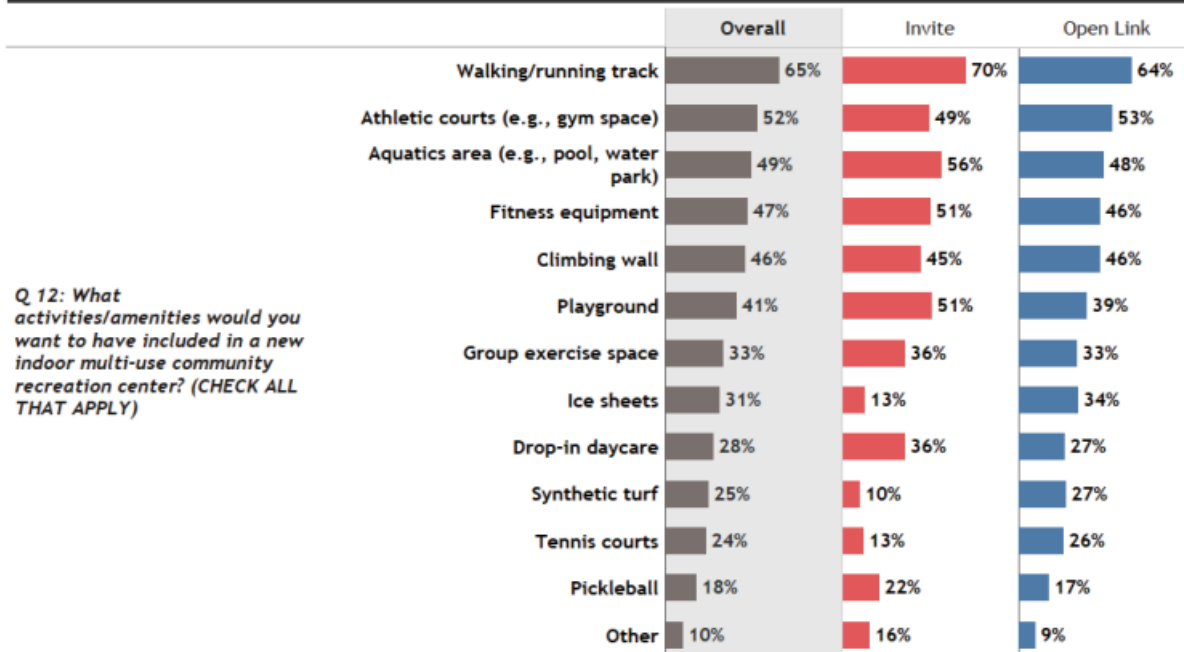


# COMMUNITY SNAPSHOT

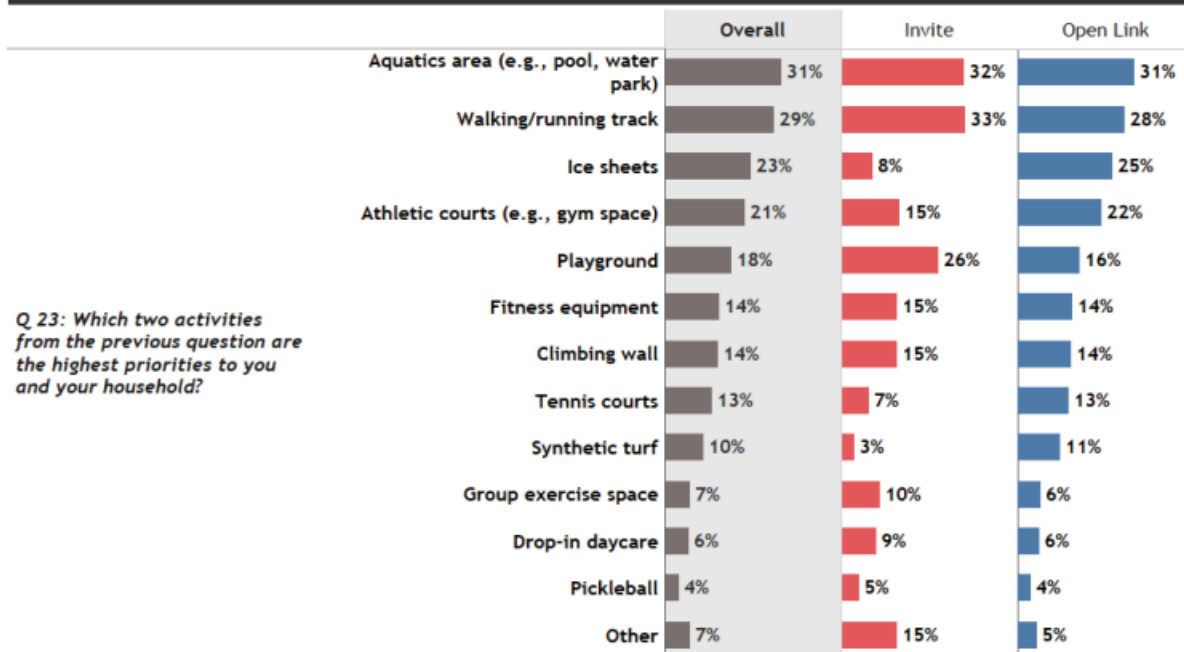
## Survey Results



## Bismarck Parks and Recreation District Survey | Future Activities/Amenities Needs



## Bismarck Parks and Recreation District Survey | Future Activities/Amenities Needs



# COMMUNITY SNAPSHOT

# Recreation Facilities

FACILITY DESCRIPTION	BPRD	OTHER	ENTITY	FACILITY DESCRIPTION	BPRD	OTHER	ENTITY
<b>Amusement Park</b>		1	Superslide	<b>Ice Rinks</b>			
<b>Archery</b>	2			Outdoor Hockey Rink	5	1	schools
<b>Ball Diamonds</b>				Outdoor Pleasure Rink	5	4	schools
Baseball	12	4	UMary Shiloh Legacy HS	Indoor Rinks	4		
Softball	28			Curling Sheets	4		
<b>Basketball</b>				<b>Picnic Shelters</b>	54		
Rec. Hoops	1			<b>Playgrounds 5-12</b>	43	18	schools
Full Courts	4			<b>Playgrounds 2-5</b>	12	1	schools
Indoor Courts	3	30	Schools YMCA, BSC UMary	<b>Remote Control Airfields</b>	2		
<b>Boat Ramps</b>	9			<b>Skate Parks</b>	2		
<b>Camping Spaces</b>	239			<b>Soccer Complex</b>	3	3	Schools UMary
<b>Community Garden Sites</b>	5			<b>Stables</b>	1		
<b>Cross Country Skiing</b>	3			<b>Stadium</b> (football/soccer/track)	0	3	Bowl, Shiloh, UMary
<b>Disc Golf Courses</b>	2	1	BSC	<b>Swimming Pools</b>			
<b>Dog Parks</b>	3			Outdoor	3	1	Apple Creek
<b>Fitness Center</b>	2	3	Umary YMCA-FW	Indoor	2	2	YMCA
				<b>Pickleball Courts</b>	10		
<b>Golf Holes</b>				<b>Tennis Courts</b>			
Standard	45	36	Hawktree Apple Creek	Outdoor Courts	19	6	Legacy HS
Driving Ranges	3	2	Hawktree Apple Creek	Indoor Courts	4		
				<b>Volleyball Courts</b>			
<b>Horseshoe Courts</b>				Sand Courts	19		
Covered/Lighted	24			Indoor Courts	3	4	YMCA
Shelter Pits	33			<b>Warming Houses</b>	6		

# COMMUNITY SNAPSHOT

## LAND OWNED AND MANAGED BY BPRD

Description	Acres	Acres per 1000 Residents*
<b>Neighborhood Park</b>		
16th St. Playground	4.7	
23rd St. Playground	2.5	
A. James Silbernagel Memorial Park	4.9	
Custer Park	2.4	
Duemeland Park	4.1	
Elk Ridge	5.4	
Heritage Park	4.9	
Hidden Star Park	3.9	
Horizon Park	8.8	
Igoe Park	4.5	
Jaycee Park	11.8	
Johnny Gisi Memorial Park	3.0	
Kiwanis Park	13.6	
Marion Park	8.6	
McQuade Softball Complex	11.1	
Municipal Ballpark/Community Gardens	11.8	
New Generations Park	11.7	
Normandy Park	8.7	
North Central Park	5.4	
Optimist Park	3.0	
Promontory Park	1.9	
Sons of Norway Park	6.9	
Southland Park	2.3	
South Meadows Park	3.7	
Sunrise Park	6.6	
Tatley/Eagles Park	17.1	
Tom O'Leary Tennis Courts	1.8	
Wachter Park	8.0	
Zonta Park	3.8	
<b>Neighborhood Park Total</b>	<b>186.8</b>	<b>2.54</b>

# COMMUNITY SNAPSHOT

<i>Description</i>	<i>Acres</i>	<i>Acres per 1000 Residents*</i>
<b>District/Community Parks</b>		
Clem Kelley Complex	39.0	
Cottonwood Park	226.0	
Hoge Island (40 acres undeveloped)	105.0	
Lions Park/Hillside Pool	35.7	
Pioneer Park and Pioneer Overlook	57.6	
Scheels Sports Complex	49.7	
Sertoma Park	143.5	
Sleepy Hollow	45.1	
<b>District Park Total</b>	<b>701.5</b>	<b>9.53</b>
<b>Historic/Interpretive Parks</b>		
Chief Lookings Village (within Pioneer Park)	17.6	
Keelboat Park	16.2	
Mills Nature Park	42.2	
Steamboat Park	4.0	
<b>Historic/Passive Park Total</b>	<b>80.0</b>	<b>1.09</b>
<b>Greenways/Open Space</b>		
Atkinson Nature Park	137.9	
Clairmont Family Conservation Park	117.0	
Edgewood Greenway	48.6	
Hay Creek Greenway	177.4	
Highland Acres Park	10.4	
Menards Trail Loop	8.6	
Overlook Green Space	7.2	
Rosa Young Property	5.8	
Silver Ranch Greenway	57.6	
Southland Greenway (minus land for Southland Park)	5.8	
Sunrise Greenway (minus land for Sunrise Park)	9.9	
Tyler Coulee Greenway	13.1	
Valley Drive Greenway	56.3	
<b>Greenway Total</b>	<b>655.6</b>	<b>8.91</b>

# COMMUNITY SNAPSHOT

<i>Description</i>	<i>Acres</i>	<i>Acres per 1000 Residents*</i>
<b>Specialty Parks</b>		<b>1.20</b>
Century Rec Complex & Bark Park	17.5	
Fox Island Boat Ramp	13.0	
Nishu Bowmen Indoor/Outdoor Archery Range	33.7	
Walt Neuen's Horse Arena	24.3	
<b>Specialty Park Total</b>	<b>88.5</b>	
<b>Golf Courses</b>		<b>6.85</b>
Tom O'Leary Golf Course (including Sheila Schafer Junior Links)	127.4	
Pebble Creek Golf Course	130.7	
Riverwood Golf Course	246.0	
<b>Golf Course Total</b>	<b>504.0</b>	
<b>Facility/Building Land</b>		<b>0.29</b>
BPRD Office/Peace Park	1.2	
Capital Racquet and Fitness Center	0.9	
Elks Aquatic Center	1.3	
Fore Seasons Center	6.0	
Frances Leach High Prairie Arts & Science Complex	2.0	
Municipal Country Club	2.0	
Capital Ice Complex	2.5	
VFW Sports Center	4.9	
World War Memorial Building	0.3	
<b>Facility/Building Total</b>	<b>21.0</b>	
<b>DISTRICT OWNED &amp; MANAGED TOTAL</b>	<b>2237.4</b>	<b>30.40</b>

*\*based on 2020 census numbers: Bismarck population of 73,622*



# COMMUNITY SNAPSHOT

## LEASED AND/OR MANAGED LAND NOT OWNED BY BPRD

<i><b>Description</b></i>	<i><b>Acres</b></i>	<i><b>Acres per 1000 Residents*</b></i>
City of Bismarck (south & north of I-94)	45.0	
Eagles Park	19.9	
East Sibley Park	108.0	
Kimball Bottoms	33.0	
Kneifel Boat Landing	13.2	
McLean Bottoms	6.5	
McDowell Dam	271.0	
Missouri Valley Complex & Joann Hetzel Memorial 4H Building	410.5	
Riverfront	308.0	
Sibley Park	138.0	
Steckel Park	6.4	
Swenson Park	13.5	
Zoeller (Hay Creek trail easement)	0.7	
<i><b>Leased/Managed Total</b></i>	<i><b>1373.6</b></i>	<i><b>18.66</b></i>
<b>ALL LAND MANAGED BY BPRD (OWNED OR LEASED) TOTAL</b>	<b>3494.1</b>	<b>47.47</b>

## Youth Sports Programs

Participation Numbers	2021	2020	2019	2018	2017	Notes
BASEBALL - YOUTH						
Participants	322	195	287	291	292	Offered by BYB
BASEBALL – BABE RUTH						
Participants	229	192	178	158	164	
BASEBALL – AMERICAN LEGION						
Participants	50	39	31	42	38	

Participation Numbers	2017	2018	2019	2020	2021	Notes
BASKETBALL						
Boys 5 <sup>th</sup>	149	125	132	102	137	Gym space continues to be an issue. Hard to schedule practice times due to overlapping programs and activities.
Teams	13	11	14	14	15	
Boys 4 <sup>th</sup>	148	142	126	102	123	
Teams	12	11	15	13	12	
Boys 3 <sup>rd</sup>	117	101	102	84	104	
Teams	11	9	10	8	10	
Girls 5 <sup>th</sup>	117	106	90	64	112	
Teams	14	13	9	12	9	
Girls 4 <sup>th</sup>	106	106	74	76	115	
Teams	12	10	9	11	10	
Girls 3 <sup>rd</sup>	89	67	72	55	103	
Teams	10	13	7	6	9	
Summer (3 <sup>th</sup> - 8 <sup>th</sup> )	67	68	81	56	85	
<b>Total</b>	<b>793</b>	<b>715</b>	<b>677</b>	<b>251</b>	<b>415</b>	

*Youth Sports Programs cont.*

Participation Numbers	2017	2018	2019	2020	2021	Notes
FLAG FOOTBALL						
3 <sup>rd</sup> - 6 <sup>th</sup>	79	75	67	45	105	Increase in numbers
GOLF						
Ages 5 and 6	143	163	164	179	190	
Ages 7 - 17	428	398	476	460	575	
Gold Level			11	0	8	
Blue Level	16	24	34	9	32	
KARATE						
	28	18	28	82	99	
FENCING						
Fencing	17	8	23	77	84	
SOCCER						
K - 1 <sup>st</sup>	242	218	238	126	262	
2 <sup>nd</sup> - 3 <sup>rd</sup>	182	197	182	109	166	
4 <sup>th</sup> - 6 <sup>th</sup>	133	131	142	102	166	
7 <sup>th</sup> - 9 <sup>th</sup>	47	34	39	15	38	
<b>TOTAL</b>	<b>604</b>	<b>580</b>	<b>601</b>	<b>352</b>	<b>632</b>	
TENNIS, YOUTH OUTDOOR/INDOOR						
Tiny Tots (Ages 3 - 4)	145	150	170	126	165	
Netters (Ages 5 - 6)	123	145	162	164	247	
8 & Under (Ages 7 - 8)	144	132	119	154	223	
10 & Under (Ages 9 - 10)	115	119	164	144	191	
High School Beginner		28	34	33	43	
High School Prep	85	61	48	82	178	
High School Team	29	37	43	45	89	
Elite Program	3	12	8	10	17	
<b>TOTAL</b>	<b>644</b>	<b>684</b>	<b>748</b>	<b>758</b>	<b>1,153</b>	

# COMMUNITY SNAPSHOT

## Programs

### Youth Sports Programs cont.

Participation Numbers	2021	2020	2019	2018	2017	
TRACK & CROSS COUNTRY						
Cross Country (3 <sup>rd</sup> - 5 <sup>th</sup> )	744	413	721	740	853	
Elementary Track Meets	1200+	1200+	1200+	1200+	1200+	All 5 <sup>th</sup> graders participate
VOLLEYBALL - YOUTH						
5 <sup>th</sup> Grade	182	147	214	189	184	Gym space for practice times and games continue to be an issue. Many schools have overlapping programs.
Teams	19	17	22	19	25	
4 <sup>th</sup> Grade	138	126	120	184	138	
Teams	16	17	13	17	16	
3 <sup>rd</sup> Grade	89	65	70	60	61	
Teams	8	7	7	6	5	
Summer Youth (5 <sup>th</sup> - 8 <sup>th</sup> )	147	94	127	130	89	
High School Sand	11 teams	10 teams	3 teams	7 teams	7 teams	
Approx. # of Participants	88	80	21	63	63	

### Adaptive Programs

Participation Numbers	2021	2020	2019	2018	2017	2016
Adaptive Bowling	5-10/week	5-10/week	5-10/week	5-10/week	5-10/week	5-10/week
Triple Star Day Camp	20	17	25	15	21	26

### Youth Educational/School Partnership Programs

Participation Numbers	2021-22	2020-21	2019-20	2018-19	2017-18	
ACTIVITY CENTERS – SUMMER PROGRAM (summer before school year)						
Activity Center Participants	521	440	648	638	626	
BLAST – AFTER-SCHOOL PROGRAM						
Participants	547	542	599	654	657	
OPEN GYM PROGRAM						
Participants	5660	5577	8708	9257	8617	Space needed
SAFETY VILLAGE (summer before school year)						
Participants	297	121	266	236	214	

# COMMUNITY SNAPSHOT

## Adult Sports Programs

Participation Numbers	2020-21	2019-20	2018-19	2017-18	Analysis
ADULT BASKETBALL					
Women's & Men's	559	798	846	874	Program numbers decreasing
ADULT CO-ED SOFTBALL					
Summer Teams	6	0	6	6	2020 summer season cancelled due to Covid - Fall numbers decreasing
Participants - Summer	94	0	90	69	
Fall Teams	17	24	27	32	
Participants - Fall	244	360	381	448	
League Tournament - Fall	6	10	9	11	
FALL VOLLEYBALL					
Coed Teams	118	107	112	129	Program is at capacity due to lack of gym space
Men's Teams	17	18	17	17	
Women's Teams	144	134	134	143	
TOTAL Teams	279	259	263	289	
Approx. # of Participants	2232	2072	2104	2312	
WINTER VOLLEYBALL					
Coed Teams	104	115	130	130	Winter numbers are decreasing
Men's Teams	19	17	19	15	
Women's Teams	129	142	144	152	
TOTAL Teams	252	274	293	297	
Approx. # of Participants (average 8/team)	2016	2192	2344	2376	
SAND VOLLEYBALL					
Coed Teams	183	143	192	207	New courts built in 2012 allowed more teams
Coed 4 Person	13	8	15	21	
Men's Teams	13	8	15	11	
Women's Teams	126	97	114	114	
Women's 4 Person	25	21	26	27	
TOTAL Teams	360	277	362	380	
Approx. # of Participants (average 7/team)		1900	2350	2450	

## PAVED TRAILS

	MILES
A. James Silbernagel Park	0.08
Ash Coulee Trail	0.9
Burleigh Avenue Trail	2.5
Cottonwood Park Loop	1.06
Cottonwood Park South Trail	0.87
Edgewood Trail	2.32
Elk Ridge Park Loop Trail*	0.4
Expressway Trail	1.83
Gateway Pond Loop	0.45
General Sibley Park & Campground	0.61
Hay Creek Trail Loop	3.14
Hay Creek Trail - south	2.47
Heritage Park Loop Trail*	0.34
Horizon Park Loop Trail*	0.37
Igoe Park Loop Trail*	0.36
Kiwanis Park Loop Trail*	0.6
Lions Park Trails	1.51
Normandy Park Loop Trails*	0.65
North Central Park Loop Trail*	0.34
Pebble Creek Loop	2.25
Promontory Point Park Trail*	0.28
Riverfront Trail #1	0.73
Riverfront Trail #2	1.26
Riverfront Trail #3	1.73
Riverfront Trail #4	2.05
Riverwood Golf Course Loop	3.62
Sertoma Park Loop	1.01
Sertoma Park Loop	3.1
Sertoma Park Trail	0.93
Sertoma Park Trail	1.46
Silver Ranch Greenway Trail	0.4
Sleepy Hollow Trail	3.78
Solheim to Wachter	1.64
Southland	0.49
South Meadows Park Loop Trail*	0.25
Sunrise Park Trail Loop	0.23
Sunrise Trail	0.79
Tom O'Leary Golf Course Loop	2.3
United Tribes Trail	1.7
University Drive Trail - North	2.64
University Drive Trail South	2.74
Valley Drive Greenway Trail	0.83
Washington Street Trail North	2.47
Washington Street Trail South	1.41
Zonta Park Loop*	0.3
<b>TOTAL</b>	<b>61.19</b>

## NON-PAVED TRAILS

	MILES
Bismarck Rotary Arboretum	0.32
Clairmont Family Conservation Park	2.58
McDowell Dam Recreational Area Loop	2.9
River Bluffs Mt. Bike Trails	3.9
Sleepy Hollow Mt. Bike Trail	4
Atkinson Nature Trail	1.65
Bill Mills Nature Trail	0.8
Chief Lookings Village Interpretive Trail	0.55
General Sibley Park & Campground	1.1
East Sibley Nature Park Loop	1.25
Missouri Valley Legacy Trail	4.58
<b>TOTAL</b>	<b>23.63</b>

## TOTAL PAVED & UNPAVED

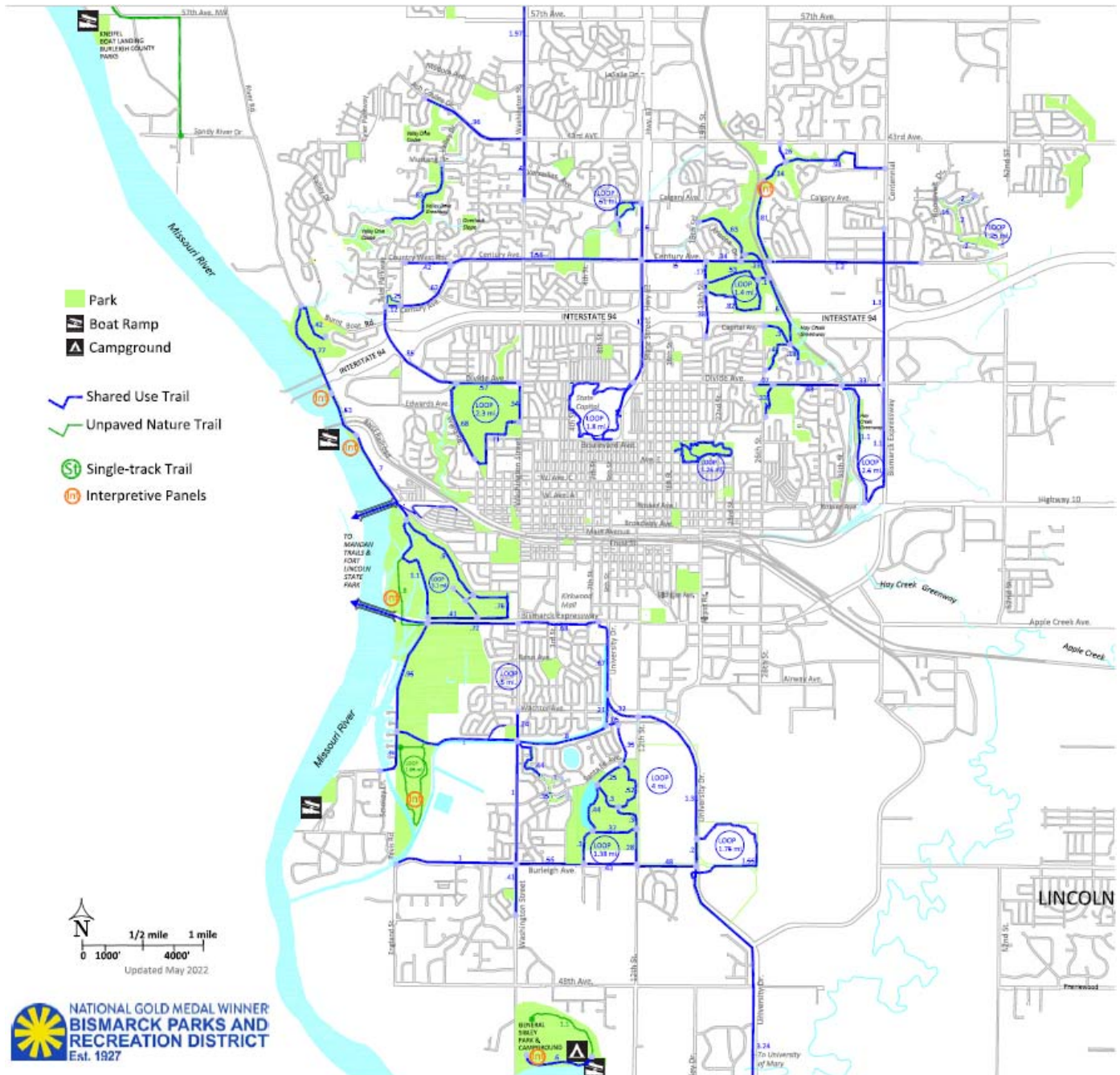
**84.82**

*\* Loop trails that include sidewalk*

*-All measurements are approximate and do not account for changes in elevation*

*-Totals do not include connector trails within parks unless listed*





# NEEDS ASSESSMENT

## Recreation Facilities

### Level of Service

The level of service for facilities within the park district is shown based on comparative benchmarks from other parks and recreation agencies with similar populations. The numbers were then analyzed based on local needs and facilities already offered within the community. Analysis included program numbers, programs at capacity, community input, user group input, and Staff input.

Facilities	Number of Existing Facilities	Park Metrics 2022 Median*	New Facilities Needed based on Park Metrics	Projected future needs**	New Facilities Needed by 2030	Notes
Pools (outdoor)	3	3	0	-	0	
Pools (indoor)	2	2	0	-	0	
Dog Park	1	2	1	1	1	need for dog park on the south side of town
Recreation Center	3	3	0	1	1	need for multi-sport indoor/outdoor complex on the north side of town
Community Center	5	3	0	-	0	
Neighborhood Playground	53	42	0	7	7	population increase; Installation with new
Soccer-adult	8	6	0	-	1	
Soccer-youth	20	18	0	-	0	
Indoor Hockey Rink	4	2	0	2	2	
Outdoor Hockey Rink	13	3	0	1	1	24% population increase
Golf Courses	3	3	0	0	0	
Softball-Adult	30	18	0	-	0	
Baseball-adult	2	5	1	1	1	
Baseball-youth	16	16	4	4	4	Includes girls fastpitch complex
Sand Volleyball	19	Not available	n/a	3	3	24% population increase Courts to be installed together for efficiency
Tennis Courts (indoor)	4	11	2	-	2	Possible addition to BSC AWC
Tennis Courts (outdoor)	23	20	3	-	3	May be added with neighborhood parks
Pickleball (indoor)	5	8	3	3	3	One court at WWMB is winter months only
Pickleball (outdoor)	15	8	0	-	-	Some courts are shared tennis/pickleball
Indoor Gym Court	3	4	1	1	2	Possible addition to BSC AWC
*benchmarks based on median results from independent/special park districts with similar population.						
** Future needs adjustment based on 24% projected population growth, local demand for programs, capacity of programs, and community input.						

# NEEDS ASSESSMENT

## Parks & Open Space

### Level of Service

The level of service for parks and open space refers to the number of acres per 1000 residents for each type of park. Estimating and recording the existing level of service provides a tool to estimate the number of acres that will be needed in the future based on population projections. The following table breaks down the levels of service by park type and shows future projected needs.

	Existing Total Acreage	Existing Average Acreage	Number of Existing Parks	Existing Acreage/ 1000 Residents**	Future Acreage Needed (based on existing level of service)*		Additional Parks Needed by 2030	Number of Additional Parks Needed by 2040
					2030	2040		
Neighborhood Park	189.1	6.8	28	2.6	61.1	106.9	9	16
District Park	701.5	87.7	8	9.5	226.8	396.5	3	5
Historic/Interpretive Parks	80.0	20.0	4	1.1	25.9	45.2	1	2
Greenways/Open Space	538.6	44.9	12	7.3	174.2	304.4	n/a	n/a
Specialty Parks	88.5	22.1	4	1.2	28.6	50.0	1	2
Golf Courses	504.0	168.0	3	6.8	163.0	284.9	1	2
<b>TOTAL</b>	<b>2101.7</b>				<b>679.6</b>	<b>1187.9</b>	<b>15</b>	<b>25-27</b>
* Based on population projection of City of Bismarck by US Census								
**Based on 2020 US Census								

### Service Areas

Park service areas refer to the radius around or distance to a park from any household. For example, a neighborhood park's service area are those households within 1/2 mile of the park in all directions. A district, or community, park and open space and greenways will serve all those within two miles. Often, however, in our changing times, families will drive to a neighborhood park rather than walk or bike, and residents will often drive to enjoy a district park such as Sertoma Park. Historic/interpretive parks, specialty parks and golf courses are considered "destinations" and therefore serve the entire community. The chart below summarizes all service areas used for the purpose of this plan.

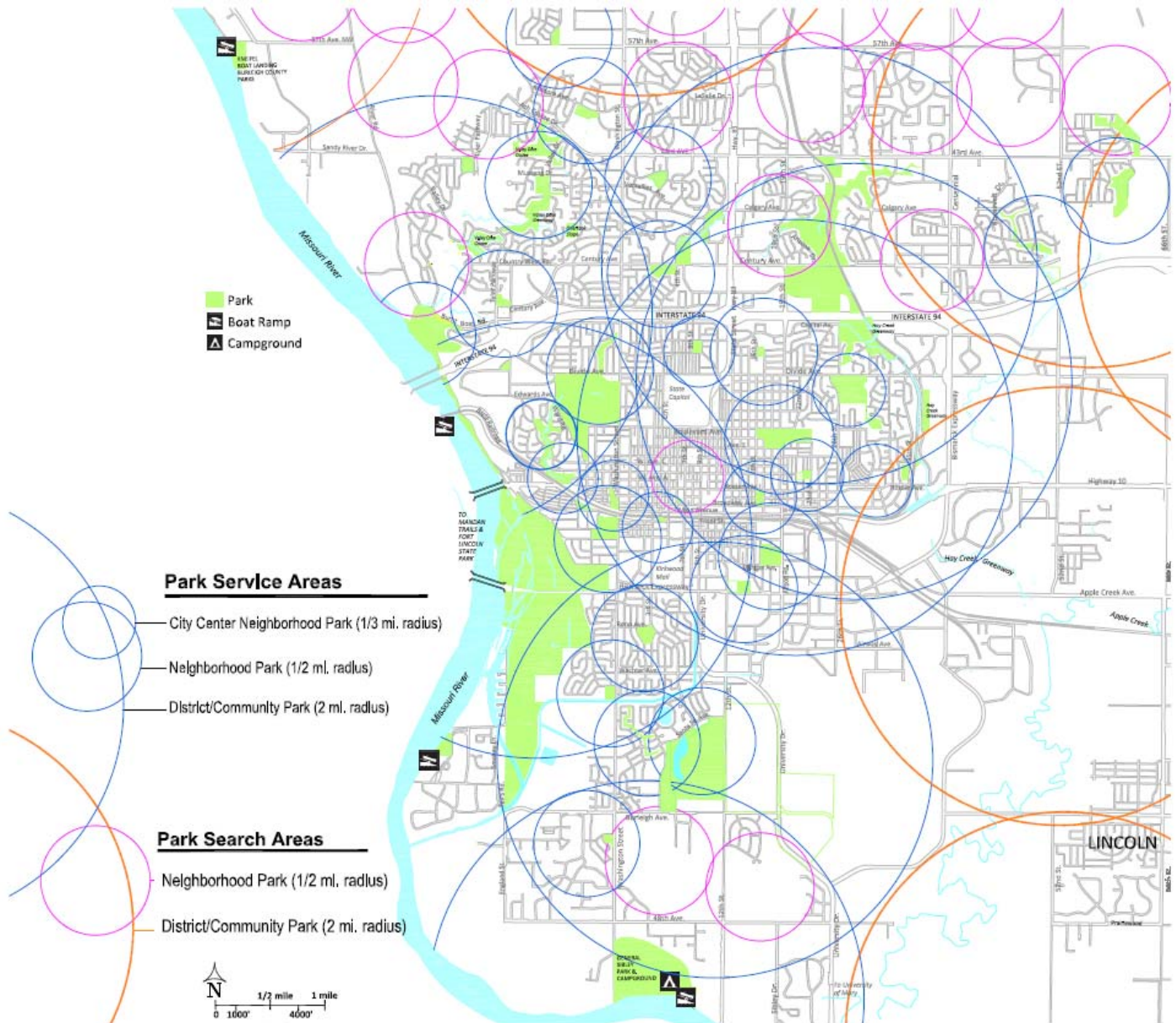
Park/Open Space Type	Park Service Area
Neighborhood Park	½ Mile
District Park/Community Park	2 Miles
Historic/Interpretive Parks	citywide destination
Greenways/Open Space	2 miles
Specialty Parks/ Athletic Complexes	citywide destination
Golf Courses	citywide destination



### Search Areas

Park search areas are proposed park service areas where a park is needed based on zoning and land use within the community. The search areas are areas within which the park district either has undeveloped land, or should try to acquire land for a park. BPRD Search Area map is located below and at the following link for an interactive map:

<https://bismarck.maps.arcgis.com/apps/mapviewer/index.html?webmap=3994298022774203b55ce8f1a53c1677>



The level of service for trails refers to the number of miles of trail per 1000 residents for each type of trail. Estimating and recording the existing level of service provides a tool to estimate the number of miles of trail that will be needed in the future based on population projections. The following table breaks down the levels of service by trail type and shows future projected needs.

Trails	Existing Total Miles	Existing Miles/ 1000 Residents**	Future Mileage Needed (based on existing level of service)*	
			2030	2040
Multi-Use Trails	60.09	0.8	20.1	35.2
Mountain Bike/Hiking Trails	21.05	0.3	7.0	12.3
<b>Total</b>			<b>27.2</b>	<b>47.5</b>
* Based on population projection of City of Bismarck by US Census				
**Based on 2020 US Census				





