

Johnny Gisi Memorial Park

2601 East Calgary Ave.
Dedicated September 23, 2015

Trailhead/Neighborhood Park Features

3.5 acres of developed neighborhood park overlooking an addition 12 acres of conservation land

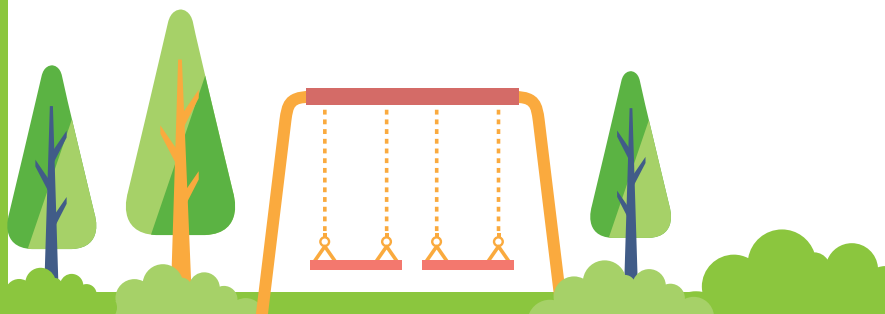
- Playground Area
 - Composite structure with canopies for ages 5-12
 - Sand play area with canopy for ages 2-5
- Open picnic shelter
- Two youth tennis/pickleball courts
- Trailhead with access to the Edgewood Trail (approx. 2.5 miles) including connections to 43rd Ave., Century Avenue, Legacy High School, and Centennial Road
- Community gardens with water access
- Overlook area with interpretive signs
- Pollinator Garden
- Parking lot
- Trees and shrubs

Project Costs:

- \$485,000

Project Partners:

- Phil Gisi Family
- Lewis and Clark Wildlife Club – Pollinator Gardens
- ND Outdoor Heritage Fund
- Bismarck Community Gardens
- Bismarck Parks & Recreation District



Let's Play!



**BISMARCK PARKS AND
RECREATION DISTRICT**
Est. 1927
www.bisparks.org